

F.A. PROJECT NO. SA-F-485-5139 SHEET NO. 5

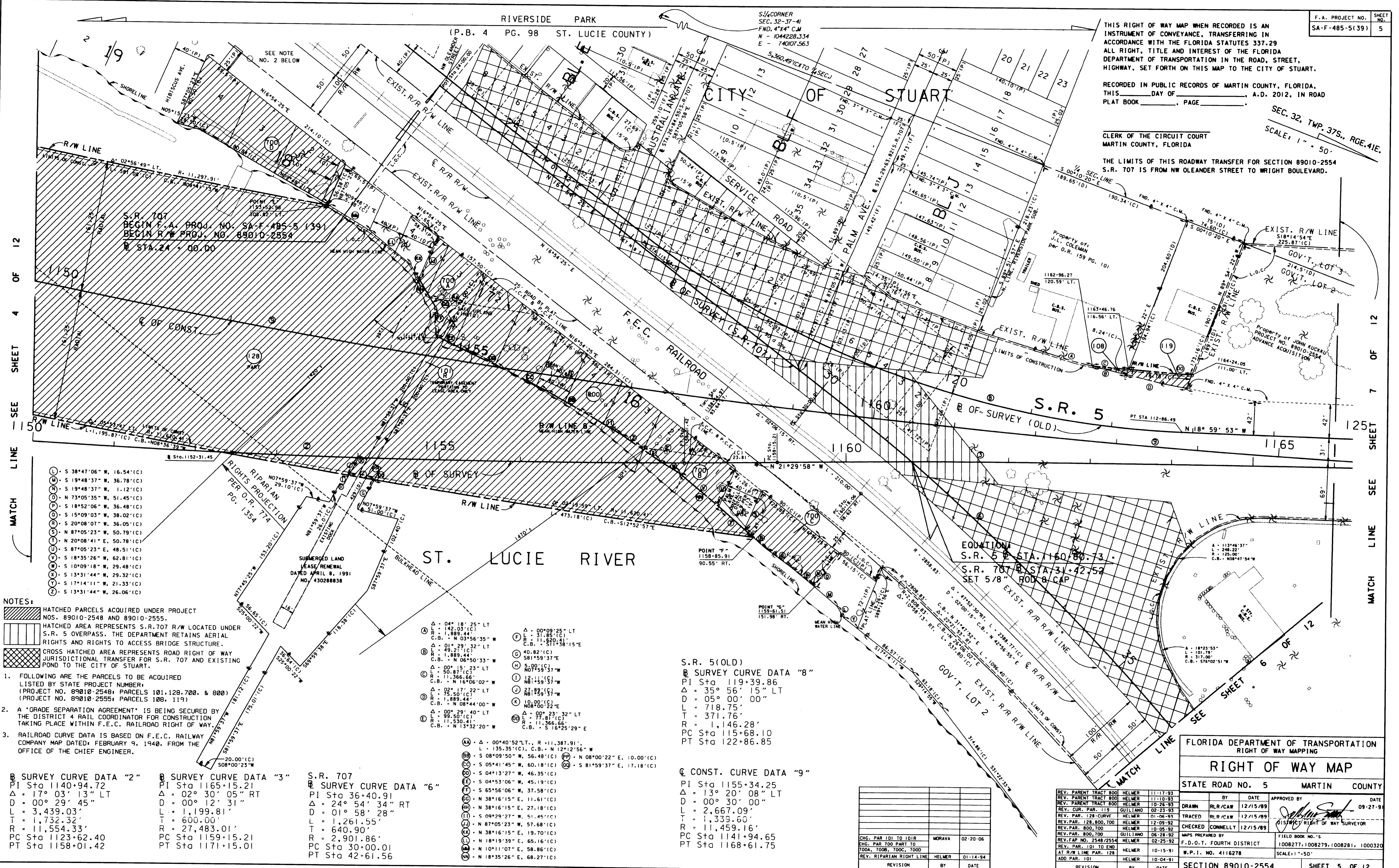
THIS RIGHT OF WAY MAP WHEN RECORDED IS AN INSTRUMENT OF CONVEYANCE, TRANSFERRING IN ACCORDANCE WITH THE FLORIDA STATUTES 337.29 ALL RIGHT, TITLE AND INTEREST OF THE FLORIDA DEPARTMENT OF TRANSPORTATION IN THE ROAD, STREET, HIGHWAY, SET FORTH ON THIS MAP TO THE CITY OF STUART.

RECORDED IN PUBLIC RECORDS OF MARTIN COUNTY, FLORIDA, THIS DAY OF _____ A.D. 2012, IN ROAD PLAT BOOK _____ PAGE _____

CLERK OF THE CIRCUIT COURT MARTIN COUNTY, FLORIDA

THE LIMITS OF THIS ROADWAY TRANSFER FOR SECTION 89010-2554 S.R. 707 IS FROM NW OLEANDER STREET TO WRIGHT BOULEVARD.

SEC. 32, TWP. 37S., RGE. 41E. SCALE: 1" = 50'



SEE SHEET 4 OF 12
LINE 1150
MATCH

SEE SHEET 7 OF 12
LINE 125
MATCH

- NOTES:**
- HATCHED PARCELS ACQUIRED UNDER PROJECT NOS. 89010-2548 AND 89010-2555.
 - HATCHED AREA REPRESENTS S.R. 707 R/W LOCATED UNDER S.R. 5 OVERPASS. THE DEPARTMENT RETAINS AERIAL RIGHTS AND RIGHTS TO ACCESS BRIDGE STRUCTURE.
 - CROSS HATCHED AREA REPRESENTS ROAD RIGHT OF WAY JURISDICTIONAL TRANSFER FOR S.R. 707 AND EXISTING POND TO THE CITY OF STUART.
- FOLLOWING ARE THE PARCELS TO BE ACQUIRED LISTED BY STATE PROJECT NUMBER:
(PROJECT NO. 89010-2548) PARCELS 101, 128, 700, & 800
(PROJECT NO. 89010-2555) PARCELS 106, 119
 - A "GRADE SEPARATION AGREEMENT" IS BEING SECURED BY THE DISTRICT 4 RAIL COORDINATOR FOR CONSTRUCTION TAKING PLACE WITHIN F.E.C. RAILROAD RIGHT OF WAY.
 - RAILROAD CURVE DATA IS BASED ON F.E.C. RAILWAY COMPANY MAP DATED: FEBRUARY 9, 1940, FROM THE OFFICE OF THE CHIEF ENGINEER.

B SURVEY CURVE DATA "2"
 PI Sta 1140+94.72
 Δ = 17° 03' 13" LT
 D = 00° 29' 45"
 L = 3,439.03'
 T = 1,732.32'
 R = 11,554.33'
 PC Sta 1123+62.40
 PT Sta 1158+01.42

B SURVEY CURVE DATA "3"
 PI Sta 1165+15.21
 Δ = 02° 30' 05" RT
 D = 00° 12' 31"
 L = 1,199.81'
 T = 600.00'
 R = 27,483.01'
 PC Sta 1159+15.21
 PT Sta 1171+15.01

S.R. 707
B SURVEY CURVE DATA "6"
 PI Sta 36+40.91
 Δ = 24° 54' 34" RT
 D = 01° 58' 28"
 L = 1,261.55'
 T = 640.90'
 R = 2,901.86'
 PC Sta 30+00.01
 PT Sta 42+61.56

- Δ = 04° 18' 25" LT
L = 1,889.44'
C.B. = N 03° 56' 35" W
- Δ = 01° 29' 32" LT
L = 1,889.44'
C.B. = N 06° 50' 33" W
- Δ = 00° 15' 23" LT
L = 50.87'(C)
C.B. = N 06° 06' 02" W
- Δ = 02° 17' 22" LT
L = 75.50'(C)
C.B. = N 08° 44' 00" W
- Δ = 00° 29' 40" LT
L = 11,530.41'
C.B. = N 13° 32' 20" W
- Δ = 00° 05' 25" LT
L = 31.85'(C)
C.B. = S 11° 50' 15" E
- Δ = 40.82'(C)
S 81° 59' 37" E
- Δ = 18.15'(C)
N 81° 59' 37" W
- Δ = 10.00'(C)
N 08° 00' 22" E
- Δ = 00° 23' 32" LT
L = 77.81'(C)
C.B. = S 16° 25' 29" E
- Δ = 00° 40' 52" LT, R = 11,387.91',
L = 135.35'(C), C.B. = N 12° 12' 56" W
- Δ = 08° 09' 50" W, 56.48'(C) PP = N 08° 00' 22" E, 10.00'(C)
- Δ = 05° 41' 45" W, 60.18'(C) PP = S 81° 59' 37" E, 17.18'(C)
- Δ = 04° 13' 27" W, 46.35'(C)
- Δ = 04° 53' 06" W, 45.19'(C)
- Δ = 65° 56' 06" W, 37.58'(C)
- Δ = 38° 16' 15" E, 11.61'(C)
- Δ = 38° 16' 15" E, 27.18'(C)
- Δ = 09° 29' 27" W, 51.45'(C)
- Δ = 87° 05' 23" W, 57.68'(C)
- Δ = 38° 16' 15" E, 19.70'(C)
- Δ = 18° 19' 39" E, 65.16'(C)
- Δ = 10° 11' 07" E, 58.86'(C)
- Δ = 18° 35' 26" E, 68.27'(C)

S.R. 5 (OLD)
B SURVEY CURVE DATA "8"
 PI Sta 119+39.86
 Δ = 35° 56' 15" LT
 D = 05° 00' 00"
 L = 718.75'
 T = 371.76'
 R = 1,146.28'
 PC Sta 115+68.10
 PT Sta 122+86.85

Q CONST. CURVE DATA "9"
 PI Sta 1155+34.25
 Δ = 13° 20' 08" LT
 D = 00° 30' 00"
 L = 2,667.09'
 T = 1,339.60'
 R = 11,459.16'
 PC Sta 1141+94.65
 PT Sta 1168+61.75

CHG. PAR 101 TO 101R	MORAVA	02-20-06
REV. PAR 700 PART TO		
TOOD, 700B, 700C, 700D		
REV. RIPARIAN RIGHT LINE	HELMER	01-14-94
REVISION	BY	DATE

REV. PARENT TRACT 800	HELMER	11-17-93
REV. PARENT TRACT 800	HELMER	11-10-93
REV. PARENT TRACT 800	HELMER	10-26-93
REV. CUR. PAR. 119	GUILIANO	02-23-93
REV. PAR. 128-CURVE	HELMER	01-06-93
REV. PAR. 128, 800, 700	HELMER	12-05-92
REV. PAR. 800, 700	HELMER	10-05-92
REV. PAR. 800, 700	GUILIANO	06-28-92
REV. PAR. NO. 2548/2554	HELMER	02-25-92
REV. PAR. 101 TO END	HELMER	10-15-91
AT R/W LINE PAR. 128	HELMER	10-04-91
ADD PAR. 101	HELMER	10-04-91
REVISION	BY	DATE

FLORIDA DEPARTMENT OF TRANSPORTATION
 RIGHT OF WAY MAPPING

STATE ROAD NO. 5 MARTIN COUNTY

SECTION 89010-2554 SHEET 5 OF 12

BY	DATE	APPROVED BY	DATE
DRAWN	RLR/CAW	12/15/09	09-27-09
TRACED	RLR/CAW	12/15/09	
CHECKED	CONNELLY	12/15/09	

MAPS PREPARED BY: FIELD BOOK NO. 5
 F.D.O.T. FOURTH DISTRICT
 1008277, 1008279, 1008281, 1000320
 W.P.I. NO. 4116278 SCALE: 1" = 50'